



STAR 2019

The Pacific Islands Science, Technology and Resources Network Conference

SECOND CIRCULAR and CALL FOR PAPERS

STAR 2019 is now confirmed for **19-22 November 2019**. The conference will be held at the Holiday Inn, Victoria Parade, Suva, Fiji and will be in conjunction with the Pacific GIS and Remote Sensing Council **Pacific Islands GIS&RS User Conference 2019** which will commence on 25 November 2019.

The conference will be co-sponsored by the Government of Fiji, the Geoscience, Energy and Maritime (GEM) Division of the Pacific Community (SPC) and Australian Volcanological Investigations (AVI). The conference is also supported by the Pacific GIS and Remote Sensing Council (PGRSC) and the Circum-Pacific Council.

Conference Theme

The overall theme of **STAR 2019** will be:

“Water, Water Everywhere – Nor Any a Drop to Drink¹”

Although the conference theme is specific, sessions will focus on the following areas of prime importance to the Pacific Small Island Developing States (PSIDS) and highlight progress towards Sustainable Development Goals (SDGs) target of 2030:

Water and Water Resources: Will focus on all water resources and water use in the Pacific. Sourcing of adequate water for communities to use to survive is critical. Resources discussed will include rainwater harvesting, freshwater, groundwater, seawater and wastewater.

Ocean Geoscience: Will investigate the resource potential, environmental and social monitoring and management issues that relate to the EEZs, including ocean thermal energy conversion (OTEC), marine spatial planning, maritime boundaries, wave and tidal energy, Law of the Sea, ocean policy, ocean-atmospheric interactions, tsunami generation and propagation, ocean tectonics, oceanic surveys, environment of the ocean floor and maritime transport.

¹ From the poem “The Rime of the Ancient Mariner” Samuel Coleridge, 1798.



Geoscience Education: Education is the primer for development and will focus on the processes required to enhance community participation in development processes within the region.

Science of Natural Hazards and Risks to Pacific Communities: This theme will investigate the underlying science and technological aspects that provide the basis for the reduction of risk from natural hazards, including earthquakes and tsunamis, volcanoes, tropical cyclones and adaptation to climate change.

Land Use, Energy and Infrastructure Development on Pacific Islands: This theme will concentrate on the terrestrial, coastal, and nearshore areas and is expected to include examples of on-shore resources, soils, agriculture and the application of GIS and Remote Sensing to the on-shore, coastal, nearshore environment and the development of renewable energy sources.

However, papers on **any** topic related to the overall conference theme or the Pacific region in general will also be welcome and will be included in the **STAR 2019** Programme where possible.

STAR Web Site

The **STAR** web site has been developed and includes all information including circulars, conference programs. Important updates will also be provided on a regular basis. It also includes details from previous sessions. The web site can be accessed via the following link:



STAR 2019 Timetable

A detailed conference program will be available on registration, however, a tentative outline of planned events is provided below for your information:

Tuesday	18 October	Early-bird registrations and abstract submissions close
Monday	18 November	Afternoon Registrations
Tuesday	19 November	Morning Registrations, Official Opening and STAR Sessions
		Afternoon STAR Sessions
		Evening Welcome Reception (hosted by the Government of Fiji)
Wednesday	20 November	Morning STAR Sessions
		Afternoon STAR Sessions
		Evening Working Group Meetings
Thursday	21 November	Morning STAR Sessions
		Afternoon STAR Sessions conclude, STAR Business Meeting and Closing Session
		Evening Conference Reception (hosted by Geoscience, Energy and Maritime Division of SPC)
Friday	22 November	STAR Field Trip; or Drone Workshop – The Use of Technology to Collect Spatial Data



Abstract Submission

Delegates intending to participate in **STAR 2019** are hereby invited to submit abstracts and an indication of whether it will be an oral presentation or a poster. Full details should be provided on the attached registration form.

Abstracts should be limited to 300 words and provided in MS-Word format. A graphic file (jpg format) may be included in the abstract, but it must be less than 1 Mb. Abstracts should be submitted using the guidelines provided in the “STAR Instructions to Authors for Abstracts”.

Submit abstracts via email to:

starconference2019@gmail.com

Early submission is strongly encouraged with a deadline of **18 October 2019**.

Conference Format

Oral and Poster presentation sessions will be available during **STAR 2019**. However, there will be limited opportunities for oral presentations; therefore more than one poster per participant will be permitted.

Projection facilities will be available for presentations. It is planned that daily sessions will be held during the hours 09:00 – 12:30 and 14:00 – 17:00; over three days of the four-day event. Depending on the number of papers submitted, multiple sessions may be conducted.

Display boards will be available for presentation of posters. Posters may be displayed for the entire conference period.

Working Groups under the focal areas of the conference (or others depending on interest) will be convened during STAR 2019 to facilitate discussion of specialist topics issues important to the region.

Conference Publications

A **STAR 2018** Abstracts Volume will be provided to all delegates as part of the registration pack.

Registration

Early-bird registration for **STAR 2019** is strongly encouraged with the deadline being **18 October 2019**.

Registration fees for **STAR 2019** will be as follows:

- | | |
|--|-----------|
| • Delegate registrations received on/before 18 October 2019 | FJD200.00 |
| • Delegate registrations received after 18 October 2019 | FJD250.00 |
| • Pacific Island National Registrations | FJD100.00 |
| • Student Registrations (currently enrolled in a tertiary Institution) | FJD50.00 |
| • STAR Fieldtrip | FJD100.00 |

Registration fees will include morning tea, lunch and afternoon tea as well as the Conference Receptions.

Registration fees should be paid in advance and be deposited into the bank account for **STAR 2019** and a copy of the bank transfer included with your registration details. Please ensure that you **include reference to your name** when making the transfer and provide a copy of the confirmation of transfer with your registration. Bank account details are provided below:

Account Name: Science Technology and Resources (STAR)
Account Number: 65113 s40
Bank: HFC Bank
Bank Address: 371 Victoria Parade, Suva Fiji
BSB: 129-010
SWIFT Number: HFCLFJFJ (for use by overseas delegates)

Unfortunately Visa card facilities are not available. Please remit fees by electronic transfer or pay on arrival at the conference.

A **STAR 2019** Registration Form is attached to this circular, please complete and return as soon as possible.

Side Events

STAR Working Groups

Working Groups under the four focal areas (or others depending on interest) will be convened during **STAR 2019** to facilitate discussion on specialist topics and issues important to the region. Working Group details will be provided in registration packs on arrival. Currently, it is planned that the following working groups will be convened:

Education; Geothermal Resources; and Seabed Minerals.

Participants wishing to recommend the conduct of a Working Group should indicate this on the registration form.

Conference Field Trip

A one-day conference field trip will be offered. The field trip will focus on a visit to two islands located on large reef complexes located 8nm east of Suva adjacent to the largest river delta in Fiji, the Rewa River. These islands are composed of a matrix of carbonate material deposits after the Holocene high stand between 6000-3000 years ago. Both islands are well vegetated with Nukulau having a developed water table that has been mapped using both resistivity and ground penetrating radar.

During the early part of the last century the islands were used as quarantine centres for the Gurmit arrivals to support the development of the sugar industry in Fiji. The contrasting difference in the island geomorphologies are most interesting with Makaluva Island proving historically to be the more dynamic of the two. Existing infrastructure on Makaluva from those early times now occupy positions on the reef platform providing excellent markers for geo-referencing imagery. Causes in such dynamic shoreline position are attributed to be both natural and anthropogenic impacts, the building of channels. The 1953 Tsunami is considered to have impacted the island as well. The field trip will provide first-hand experience as to the difficulties of infrastructure development on such dynamic island environments. A look back in history in respect to their settlement will also be a feature of the field trip.

Further details will be made available in due course via the STAR web site.

Drone Workshop - The Use of Technology to Collect Spatial Data

A one-day workshop has been organised in conjunction with the University of the South Pacific (USP). The workshop will be aimed at gathering and interpreting spatial data. Due to the integration of skills building in drone and GIS technologies I think it would represent a great opportunity for conceptually linking STAR (and its participants) across with the following GIS conference.

Further details will be made available in due course via the STAR web site.





Immigration Requirements

As Fiji is a popular holiday destination entry is quite relaxed. Visitors from most countries are issued with a tourist visa on arrival. However, it is also advisable to check with your travel agent to confirm visa requirements before you depart.

Visitors will need a passport with at least 6 months validity and a valid return ticket.

Accommodation

Accommodation bookings for your stay in Suva will be an individual responsibility and you will need to confirm bookings with the hotel of your choice using their process. Several accommodation options at or near the conference venue include:

The **Holiday Inn - Suva**, Victoria Parade, Suva. As the venue for the conference the Holiday Inn provides options which can include Ocean view rooms, the SPC rate for the conference will be FJD397 per night which includes breakfast and unlimited WiFi. When booking please mark for the attention of Ms Veijinia Kacisolomone. Details of the Holiday Inn can be found on their website through the following link:

[Holiday Inn Suva](#)

Grand Pacific Hotel: Victoria Parade, Suva. A short walk (next door) to the conference venue offers colonial splendour and views of the Suva waterfront. Room rates will be FJD577 per night (Park view Room); FJD635 (Superior Room) and FJD681 (Premium Room). All include breakfast, WiFi and access to the fitness Centre. Details can be found on their website on the following link:

[Grand Pacific Hotel](#)

The Suva Motor Inn: Gorrie Street, Suva. A short walk to the conference venue. Offers comfortable rooms that range in price from FJD185 to FJD205 per night (per person, FJD25 extra person)(SPC corporate rates). Full details can be found on their website through the following link:

[The Suva Motor Inn](#)

The Tanoa Plaza: Cnr Gordon and Malcolm St, Suva. A short walk to the conference venue. Offers comfortable Superior class rooms at FJD340 per night with WiFi and full buffet breakfast)(special SPC conference rate). Full details can be found on their website through the following link:

[Tanoa Plaza Suva](#)

There are also several other hotels close to the conference venue:

The Elixir Hotel and Serviced Apartments: Cnr Gordon and Malcolm St, Suva. A short walk to the conference venue. Offers comfortable studio apartment at FJD112 per night, room only (FJD166 per night for a 2-bedroom family apartment). Full details can be obtained from their website:

[Elixir Hotel and Serviced Apartments](#)

The Southern Cross Hotel: Gordon St, Suva. Offers Standard rooms (without balcony) and Deluxe rooms (with balcony) from FJD180. Rates include a buffet breakfast and WiFi (Note WiFi is only available in the lobby area). See web site for further details.

[Southern Cross Hotel](#)

Note: Some hotels provide a free shuttle service to and from the airport but it is a good idea to check when making the booking.

Other Activities

There are many activities that can be enjoyed in the Suva area or on the Coral Coast, a short distance from Suva. For details please consult the numerous available travel web sites and the hotel tour desks will be able to provide information should you require it.

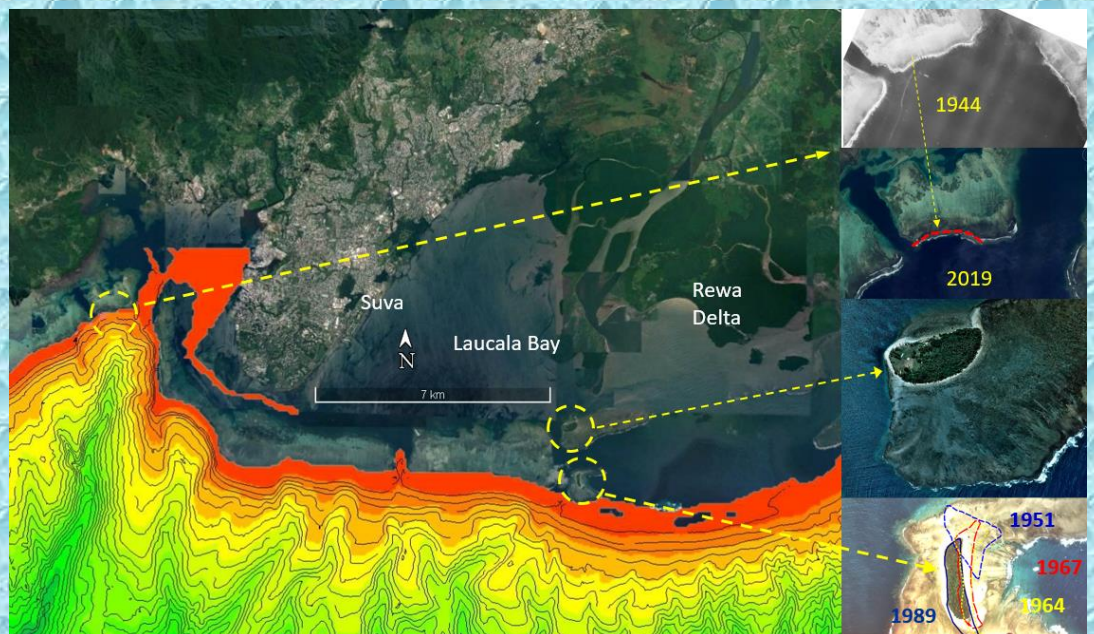
If you plan to be a little more adventurous during your stay in Fiji it may be worth checking the Fiji Tourism web site at the following:

[Tourism in Fiji](#)

The **STAR** Steering Committee would like to take this opportunity to thank you for your interest in **STAR 2019** and we hope that you enjoy the conference and the delights that Fiji has to offer while you are here.

Vinaka

Dr Raijeli Taga
Deputy Secretary
Ministry of Lands and Mineral Resources
Chair, STAR Steering Committee



The panel on the left is from Google earth with multibeam data overlay illustrating the complex fore-reef slope bathymetry. On the right based on aerial imagery taken in 1944 and Google earth imagery 2019 (top) shows detail of fore-reef failure following the 1953 earthquake that generated a Tsunami. The 1998 imagery used as a backdrop for Nukulau island middle top and Makaluvu bottom are illustrated. For Makaluvu an interpretation of shoreline change for the island is shown.

[The island motifs used here is a collage of island designs that are representative of the Pacific Region. Individual motifs are based on various popular island designs. Images have been downloaded from the "Tapa Cloths from the Pacific and Artwork" website: www.tapapacific.com, accessed 10 November 2016. The use of the images are gratefully acknowledged.]



STAR 2019

REGISTRATION FORM

Registration Details

Name:	
Mailing Address:	
Telephone:	
Email:	
Fax:	
Organisation:	

I will be attending:	
<input type="checkbox"/>	STAR 2019 Conference (19 - 21 November 2019)
<input type="checkbox"/>	Conference Field Trip (22 November 2019)(payment to be provided at conference)
<input type="checkbox"/>	Drone Workshop (22 November 2019)
<input type="checkbox"/>	Conference Registration payment details attached

Conference Contributions

Title of Paper(s):	
Author(s):	
Institutional Affiliation(s):	
Presentation Mode (Oral or Poster):	
Presenter(s):	
I am interested in participating in	Working Group(s)
I would be interested in assisting to establish a Working Group on the following topic:	

Please email completed registration forms to:

STAR 2019 Steering Committee

Email: starconference2019@gmail.com

STAR Website: <http://star.gem.spc.int>